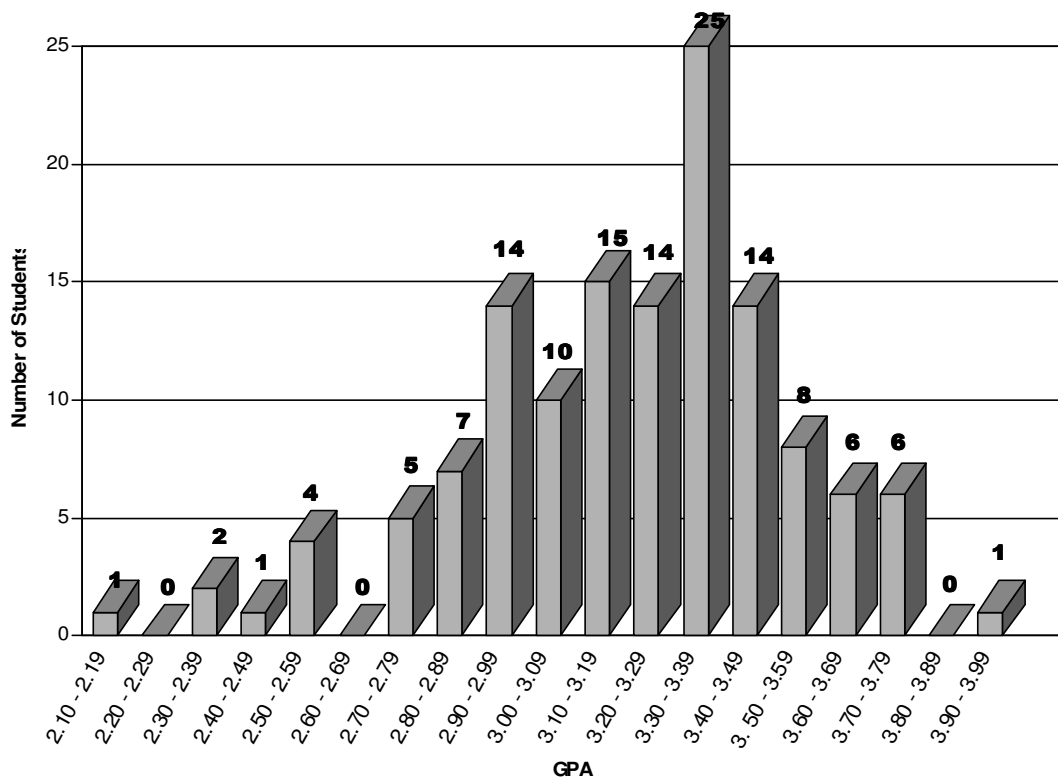


Class of 2006 GPA Distribution

Upon Completion of Summer Semester 2005
(133 Students)



Please note that the range of GPA distribution for most of the class is narrow. The difference between the cumulative GPA for a student at the bottom of the top third of the class (66%ile) and the cumulative GPA for a student at the top of the bottom third of the class (33%ile) is only .253 on a 4.00 scale.