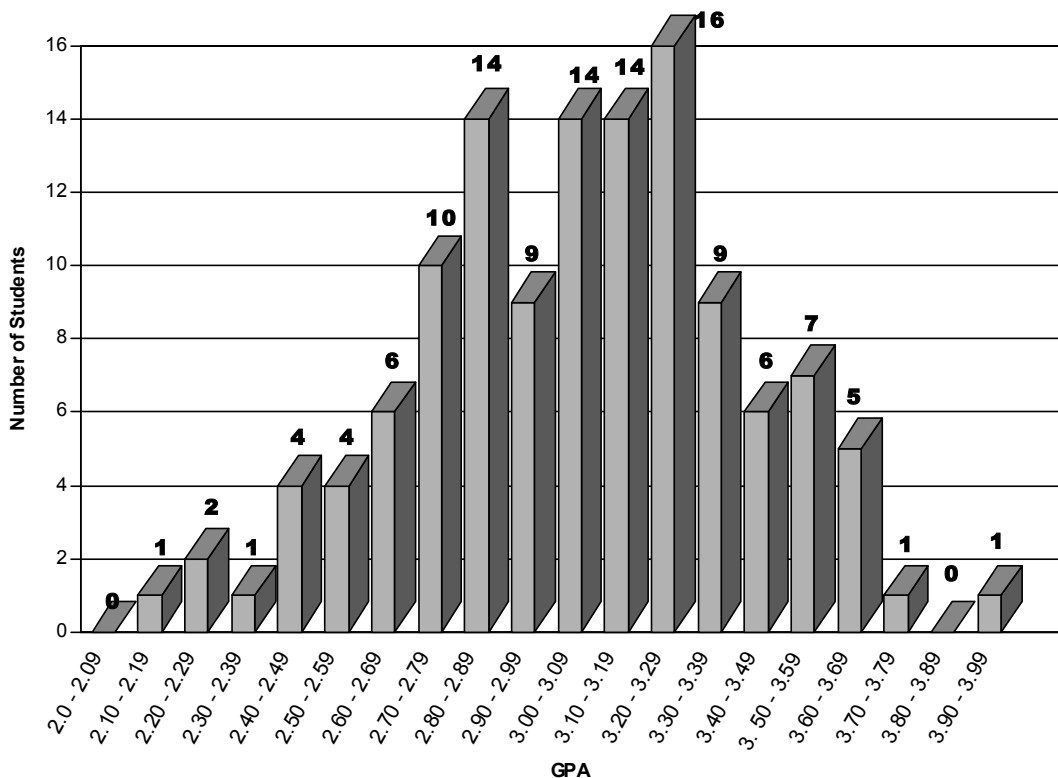


Class of 2006 GPA Distribution

Upon Completion of Academic year 2003-04
(124 Students)



Please note that the range of GPA distribution for most of the class is narrow. The difference between the cumulative GPA for a student at the bottom of the top third of the class (66%ile) and the cumulative GPA for a student at the top of the bottom third of the class (33%ile) is only .31 on a 4.00 scale.