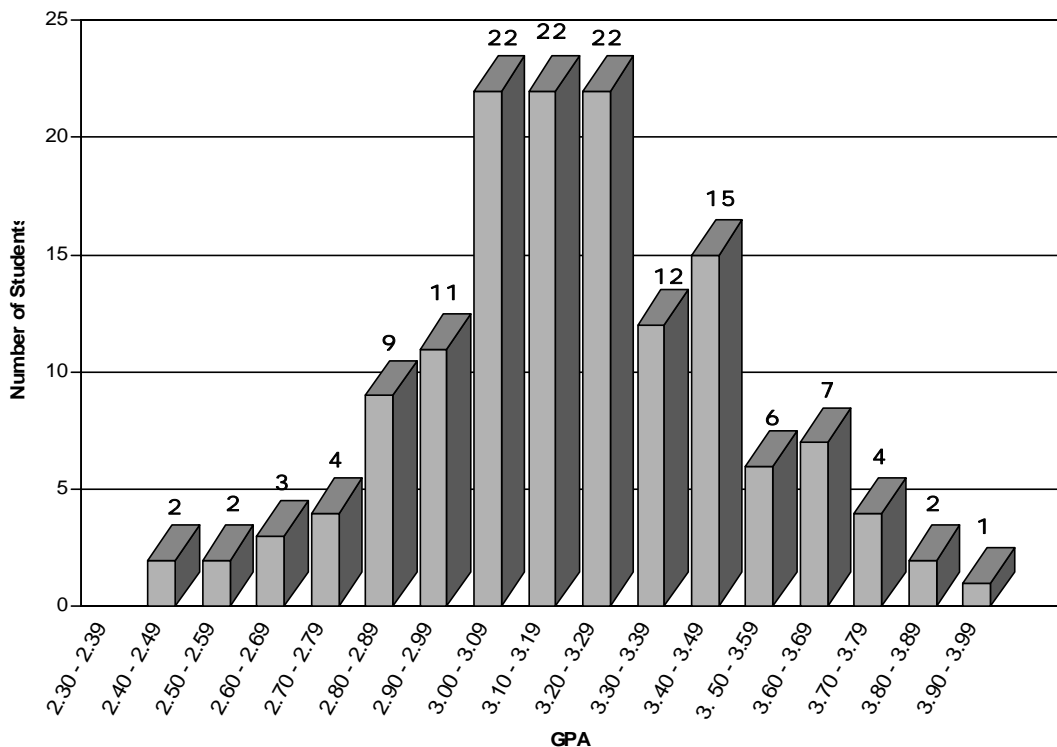


# Class of 2005 GPA Distribution

Upon Completion of Spring Semester 2005  
(144 Students)



**Please note that the range of GPA distribution for most of the class is narrow. The difference between the cumulative GPA for a student at the bottom of the top third of the class (66%ile) and the cumulative GPA for a student at the top of the bottom third of the class (33%ile) is only .204 on a 4.00 scale.**